

---

# AGI Slot Installation Guide

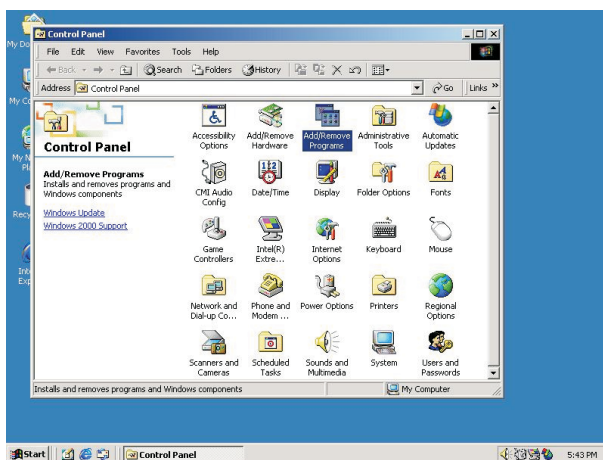
## (for Windows 2000)

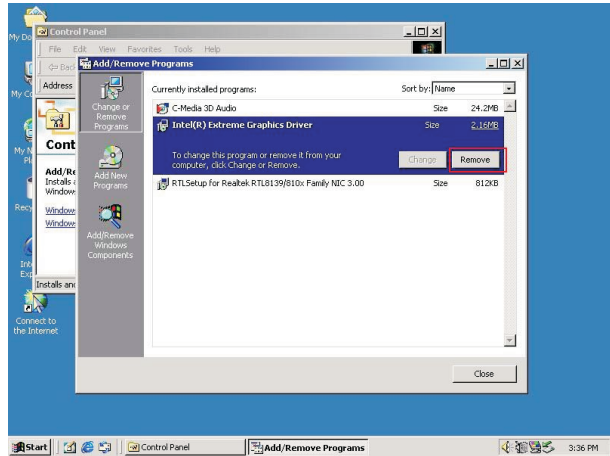
This installation guide will lead you to install AGP VGA card into AGI slot properly. Please carefully follow the procedures below according to the current condition of your PC system.

- A. Your OS (Operating System) was first installed with onboard VGA and now you would like to use an add-on AGP VGA card.

### STEP 1: Remove the onboard VGA driver.

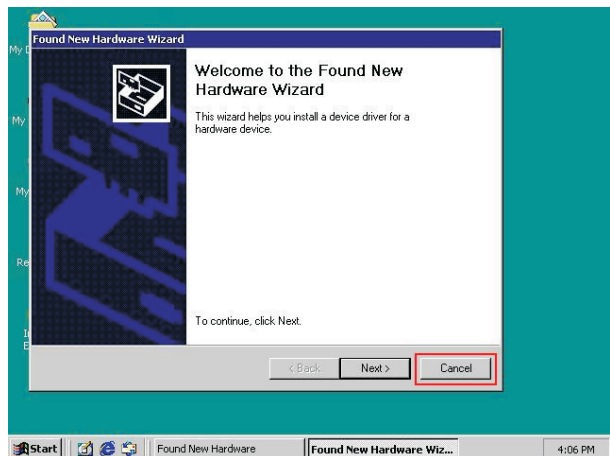
Please go to “Control Panel” → “Add or Remove Programs”, choose “Intel® Extreme Graphics Driver” and click “Remove”. Then, restart the computer. (See **Note 1**)

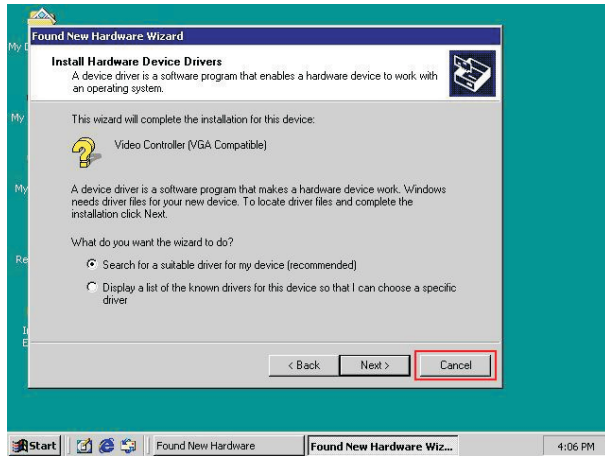




### Note 1:

When rebooting the system before you proceed to STEP 4, windows might reports “Found New Hardware --- Video Controller (VGA Compatible)” and ask you to set the onboard VGA drivers. When you see the “Found New Hardware Wizard” dialogue box, please click on “Cancel” button and DO NOT install the onboard VGA drivers until STEP 3 is completed.





## **STEP 2: Install the add-on AGP VGA Card into AGI slot**

Shut down the system and install your add-on AGP VGA card into the AGI slot.

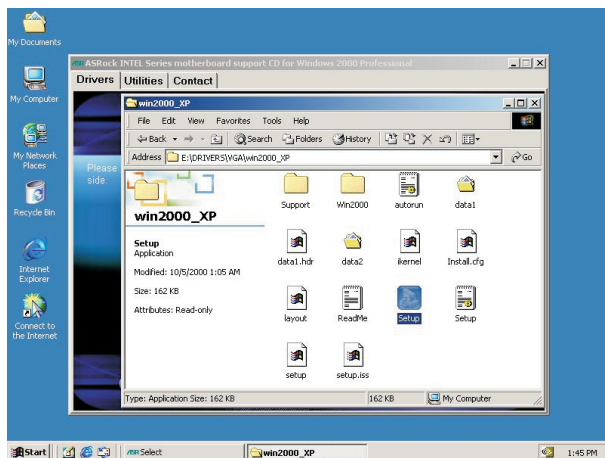
## **STEP 3: Install the add-on AGP VGA Card Driver**

Boot up the computer and install the add-on AGP VGA card driver, which is provided by the card vendor. Then, restart the computer. (See **Note 1**)

---

#### STEP 4: Re-Install the Onboard VGA Driver to utilize Dual Monitor function

Install the onboard VGA driver again from our support CD (CD:\DRIVERS\VGA\win2000\_XP\Setup) if you want to utilize Dual Monitor function. (See **Note 2**)



- 
- B. You would like to install OS (Operating System) with an add-on AGP VGA card.

**STEP 1: Install the add-on AGP VGA card**

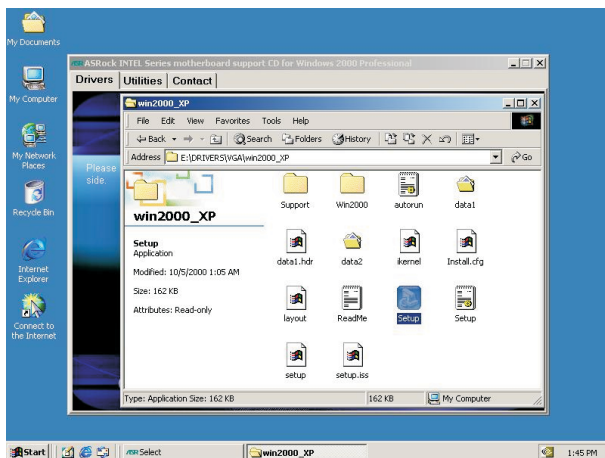
Install your AGP card into the AGI slot.

**STEP 2: Install the add-on AGP VGA card driver**

Please install the add-on AGP VGA card driver, which is provided by the card vendor, right after you install the OS, Intel INF, Audio, and LAN driver. Restart the computer.

**STEP 3: Install the onboard VGA driver to utilize Dual Monitor function**

Install the onboard VGA driver from our support CD (CD:\DRIVERS\VGA\win2000\_XP\Setup) if you want to utilize Dual Monitor function. (See **Note 2**)

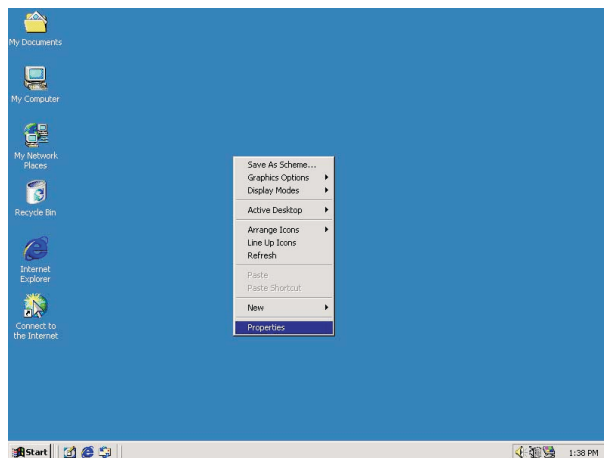


---

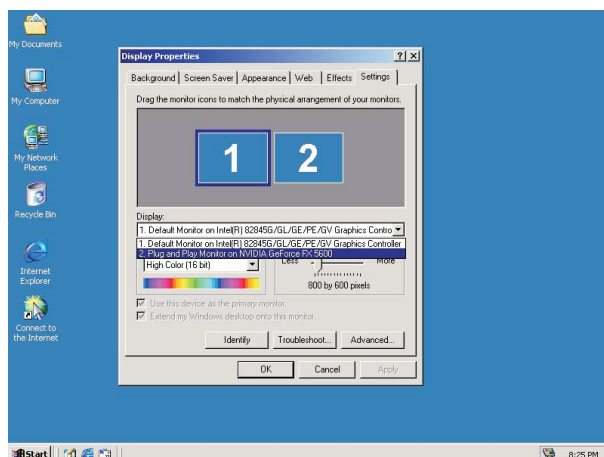
## Note 2:

If both the add-on AGP VGA card driver and onboard VGA drivers are installed, the dual-monitor display is enabled. Once the dual-monitor display is enabled, you may follow the instruction below to view the status of the dual-monitor display or adjust the parameters of the two monitors.

1. Right click the desktop, select “Properties”.



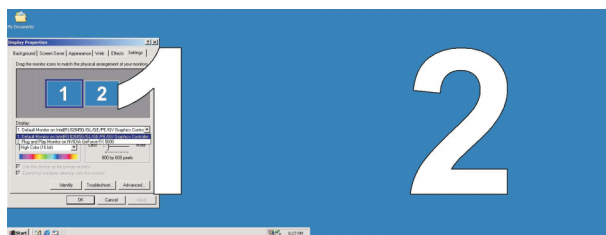
2. Select “Display Properties” → “Settings” so that you can adjust the parameters of the two monitors.



---

### Important Note:

Please note that you must have TWO monitors to use the dual monitor feature. If you only have one monitor, or you fail to do any of the above procedures, the system may lose the display output on its connected monitor while it may be displayed on another monitor. Besides, you need to use the OS that supports dual monitor function.



### Important Note for Windows 2000 User:

In Window 2000, an add-on AGP VGA card might not be set as the default primary monitor adaptor. You can go back to the onboard VGA by right-clicking the desktop, and then select “Properties” → “Display Properties” → “Settings”. Check the “Use this device as the primary monitor” box to select your primary monitor adaptor.

